

MESA works!

READYING CALIFORNIA'S FUTURE STEM WORKFORCE

MESA students succeed with:

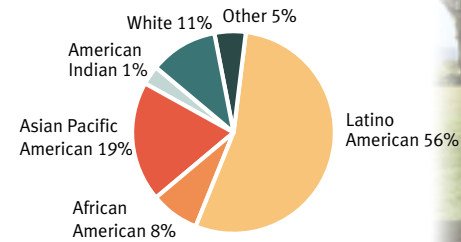
- Academic support based on high standards
- Individual counseling to ensure that college prerequisites and transfer/college graduation requirements are met
- Industry involvement in activities and strategic planning
- Reinforcement of California math and science standards through hands-on projects and group learning
- Supportive student communities based on academic success
- Professional development for math and science teachers in low-performing schools (with scores in lowest 2 quintiles of Academic Performance Index).
- Networks of parents, educators, industry leaders and community resources to support students



MESA STUDENTS†

	Students	Centers
K-12*	20,299	19
Community College	4,707	36
University	3,186	12
Total	28,192	67

*164 high schools, 174 middle & junior highs, 55 elementary schools



MESA provides a solution

California needs STEM professionals.

California currently has almost 900,000 STEM jobs, expected to increase to 1.1 million—or 19%—by 2018.

Unfortunately, California is not on track to fill these jobs. Over a 6-year period, California's ranking for students completing a four-year degree in a STEM field fell from 14th highest in the nation to 45th.

With California's rapid change in demographics, it is imperative to prepare student groups that are historically underrepresented in STEM fields. MESA provides opportunities for educationally disadvantaged students to succeed in these urgently needed areas of study and to become successful STEM graduates.

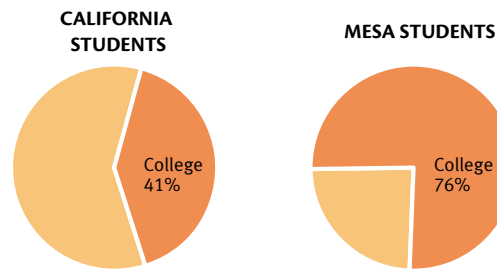
MESA is the solution.

All data sources are available from the MESA Statewide Office.

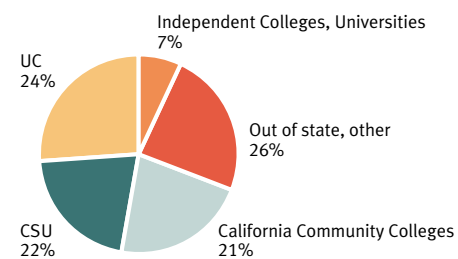


MESA AND EDUCATION DESTINATIONS†

Almost twice as many MESA high school seniors go to college, compared with all California high school graduates.



Where do MESA high school graduates go?



MESA AND STEM (SCIENCE, TECHNOLOGY, ENGINEERING AND MATH)†

53% of MESA pre-college students go to college in STEM majors

97% of MESA community college students transfer to four-year institutions in STEM majors

Top destinations of MESA high school grads

- UC Irvine
- UC Berkeley
- UC Davis
- UCLA
- UC San Diego

Top destinations of MESA transfer students

- UC Davis
- UC Berkeley
- Cal Poly San Luis Obispo
- UC Santa Cruz and UCLA (TIE)
- San Jose State University

Top transfer majors: MESA community college students

- Engineering
- Life sciences
- Math
- Biochemistry
- Computer science

Top subjects: MESA university-level graduates

- Civil Engineering
- Mechanical Engineering
- Electrical Engineering
- Computer Science
- Computer Engineering

Industry Partners

- AT&T
- Bechtel
- Cisco
- CUDC
- Edison International
- IBM
- Oracle
- PG&E
- SDG&E
- Southern California Gas Company

Program Sponsors

- AMD
- East Bay Community Foundation
- EBMUD
- Hispanic College Fund
- James Irvine Foundation
- Riordan Foundation
- Silicon Valley Education Foundation
- Telacu
- URS
- Vasquez & Company



VISIT US AT MESA.UCOP.EDU

@MESASTEM

MESA statewide

What is MESA?

Since 1970, Mathematics, Engineering Science Achievement (MESA) has helped educationally disadvantaged students in California to become engineers, scientists and other math-based professionals urgently needed by industry.

MESA provides a unique combination of enrichment activities, hands-on competitions, counseling, academic support, industry involvement, and supportive community environment. Students are served at the pre-college, community college and university levels. MESA functions with a partnership of all the major public and private education systems in California and with industry.

Funded by the State of California, MESA is administered by the University of California, with funding allocated from UC and the California Community College Chancellor's Office. MESA leverages its state funding to garner additional financial and resource support from private and public sources.

Who does MESA serve?


Most MESA students are first in their families to attend college. Most are low-income and attend (or graduated from) low-performing schools. With MESA's support, these students excel in science, technology, engineering and math (STEM) studies—some of the most difficult academic subjects.

What makes MESA successful?

Over its 44-year history, MESA has established benchmarks, identified best practices, and refined its model to ensure the most effective STEM program for its students. This continuous improvement approach has resulted in a highly successful model for STEM success.

MESA has received awards from the White House and the Ford Foundation and is a model for similar programs in more than a dozen states.





University of California
300 Lakeside Drive, 7th Floor
Oakland, CA 94612-3550
(510) 987-9337
<http://mesa.ucop.edu> 7/14

EDUCATION PARTNERS
UC Office of the President
California Community Colleges, Chancellor's Office
CSU Office of the President
Association of Independent California Colleges and Universities
California Department of Education

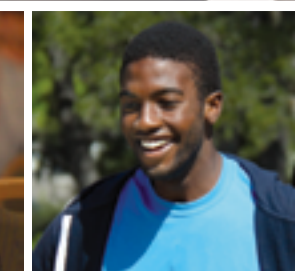
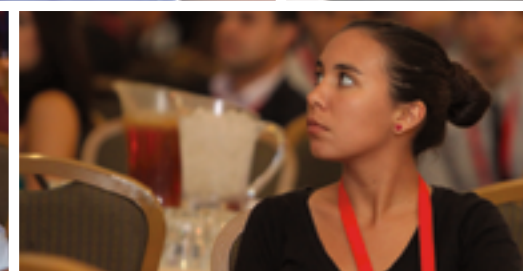
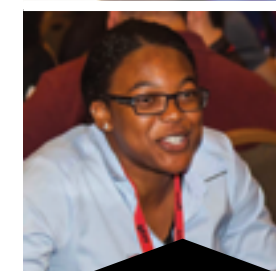
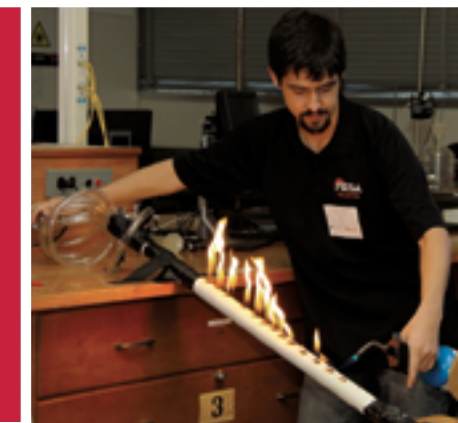
MESA CENTER LOCATIONS

UC: UC DAVIS • UC IRVINE • UC LOS ANGELES • UC RIVERSIDE • UC SANTA BARBARA • UC SANTA CRUZ •

CSU: CSU CHICO • CSU EAST BAY • CSU FRESNO • CSU LONG BEACH • CSU LOS ANGELES • CSU SACRAMENTO • SAN DIEGO STATE UNIVERSITY • SAN FRANCISCO STATE UNIVERSITY • SAN JOSE STATE UNIVERSITY • SONOMA STATE UNIVERSITY • **INDEPENDENT UNIVERSITIES:** CHAPMAN UNIVERSITY • UNIVERSITY OF THE PACIFIC • UNIVERSITY OF SOUTHERN CALIFORNIA • **COMMUNITY COLLEGES:** ALLAN HANCOCK COLLEGE • AMERICAN RIVER COLLEGE • BAKERSFIELD COLLEGE • BUTTE COLLEGE • CABRILLO COLLEGE • CAÑADA COLLEGE • CHABOT COLLEGE • CITY COLLEGE OF SAN FRANCISCO • COLLEGE OF THE CANYONS • COLLEGE OF THE DESERT • COLLEGE OF THE SEQUOIAS • COLLEGE OF THE SISKIYOU • CONTRA COSTA COLLEGE • COSUMNES RIVER COLLEGE • EAST LOS ANGELES COLLEGE • EL CAMINO COLLEGE • GAVILAN COLLEGE • HARTNELL COLLEGE • LOS MEDANOS COLLEGE • MENDOCINO COLLEGE • MISSION COLLEGE (SANTA CLARA) • NAPA VALLEY COLLEGE • PASADENA CITY COLLEGE • RIO HONDO COLLEGE (WHITTIER) • SACRAMENTO CITY COLLEGE • SAN DIEGO CITY COLLEGE • SAN JOAQUIN DELTA COLLEGE (STOCKTON) • SANTA ANA COLLEGE • SANTA BARBARA CITY COLLEGE • SANTA ROSA COLLEGE • SKYLINE COLLEGE (SAN BRUNO) • SOLANO COMMUNITY COLLEGE (SUISUN CITY) • SOUTHWESTERN COLLEGE (CHULA VISTA) • VENTURA COLLEGE • WOODLAND COMMUNITY COLLEGE • YUBA COLLEGE (MARYSVILLE) • **COMMUNITY SITES:** IMPERIAL COUNTY OFFICE OF EDUCATION • RESOURCES FOR INDIAN STUDENT EDUCATION (RISE) • UKIAH UNIFIED SCHOOL DISTRICT



MESA works!




Mathematics Engineering Science Achievement

For a complete list of MESA Schools, visit www.mesa.ucop.edu/about